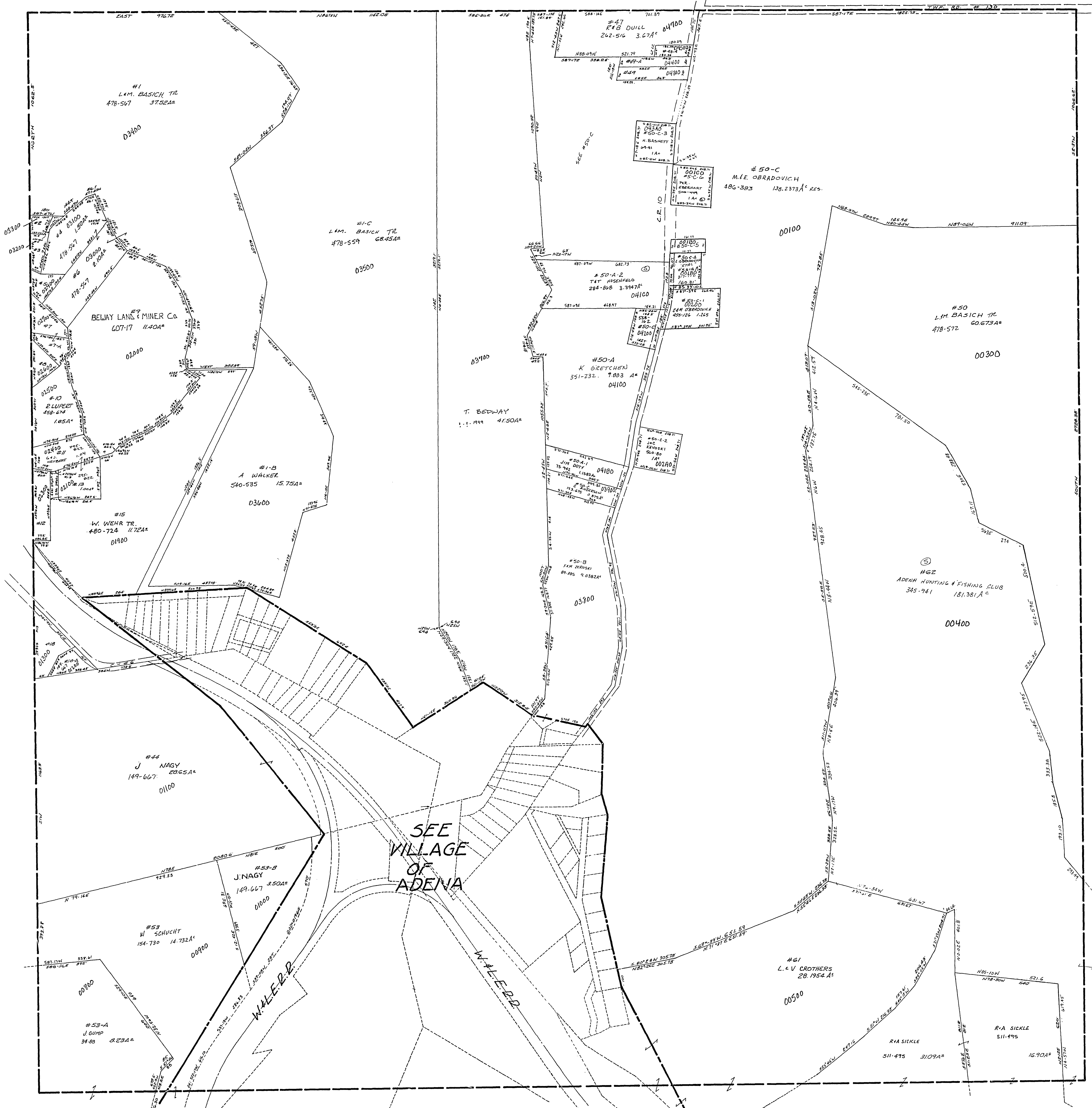


30-3200

#2	L.M. BASICH	478-547	.23A ^c
#3	"	"	.43A ^c
#5	M. WEASE	192-246	.20A ^c
#7	J. HOLYAK	202-35	.95A ^c
#7A	"	"	.42A ^c
#8	W. WALKER ETAL	42-617	0.41A ^c
#12	E. CUNNINGHAM	637-708	.63A ^c
#13	J. NAGY ETAL	166-49	1.17A ^c
#13-A	J. NAGY ETAL	181-791	.401A ^c
#19	F.M. GOOVE	930-431	.280A ^c
#19-A	E. SIKODZINSKI	78-154	.410A ^c
#20	D.J. HARTLTON	113-29	.673A ^c
⊙ #50-C-5	L.L. OBRADOVICH	317-779	0.2573A ^c
#48-A	E. BRADZENSKY	83-541	.14A ^c 6.678A ^m



SMITHFIELD TWP
 SEC. 32, T. 8, R. 3.
 SCALE: 1"=200'